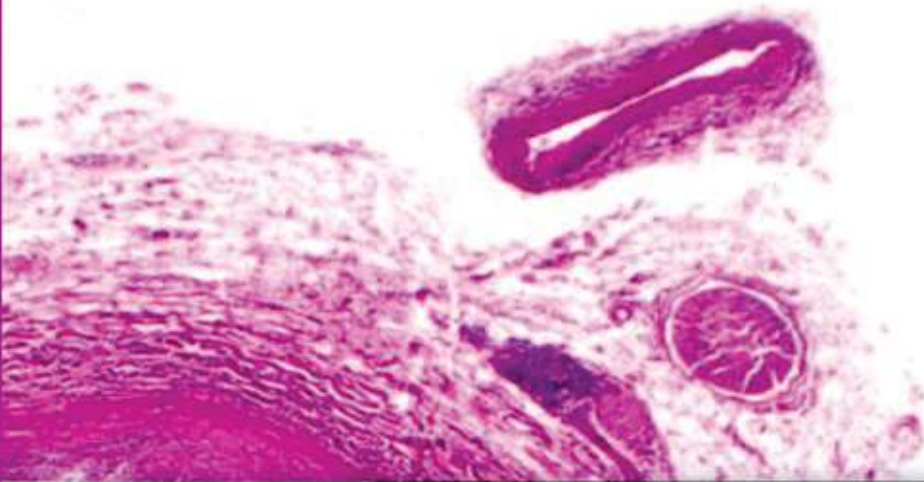
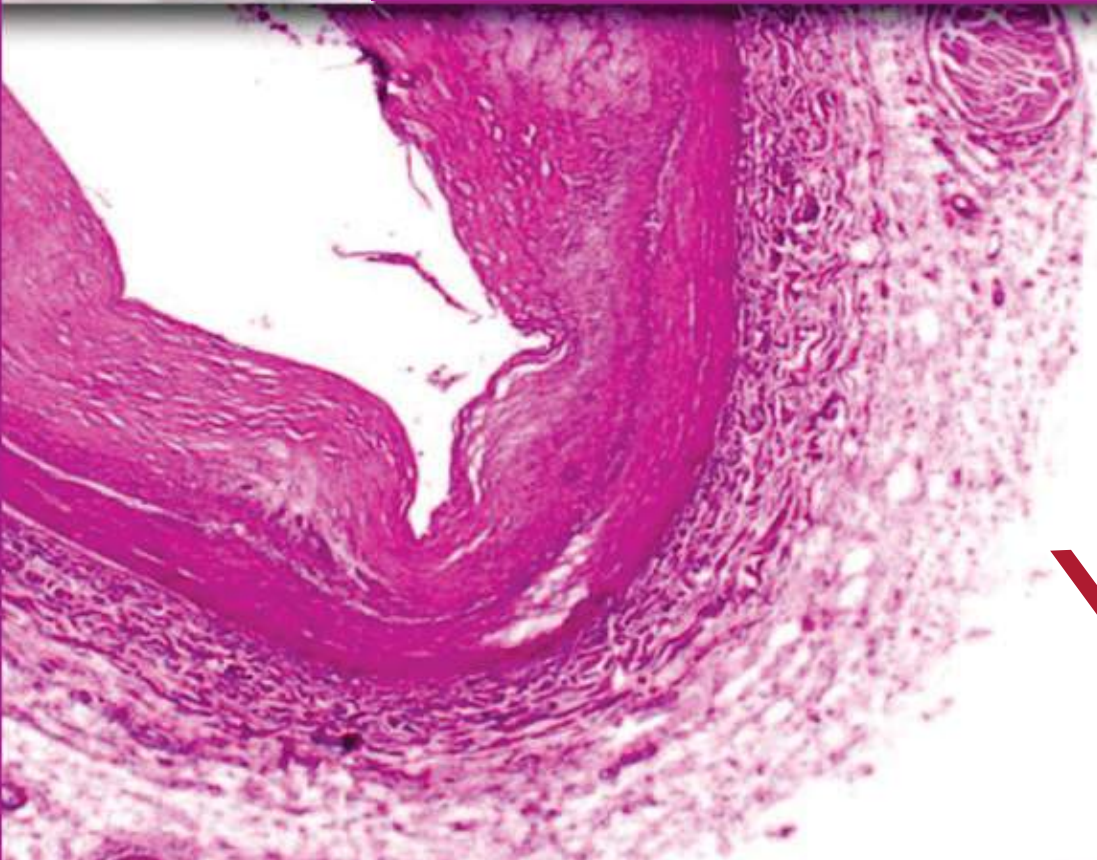


YSI

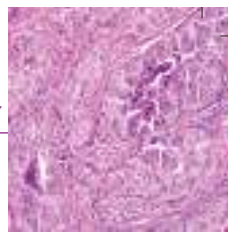


# *Histopathology*

## *Equipments*



**YORCO**  
S A L E S P V T . L T D .



**MODEL NO.: YSI-101**

**YSI AUTOMATIC TISSUE PROCESSOR**

Improved Version Model

A compact, sturdy and very reliable instrument designed with latest technology for complete automatic dehydration and filtration of human, animal and plant tissues, up to final fixing in wax. Pre-programmable provision for dehydration cycle (user selectable) is a standard feature. Glass door with lock and key arrangement provided for easy viewing also prevents unauthorized tampering of timing cycle. Tissues are subjected to continuous agitation by rotating S.S. Tissue basket for thorough penetration of reagents. An automatic adjustable delay start is another standard feature. Thermostatically controlled Stainless Steel. Wax bath maintains temperature throughout the process.

- Two numbers of unique Pin up & Pin down type Imported timers for delay programming as well as the main cycle with full flexibility for the user to program as per their requirement without any external tool or tackle or any kind of timing disc.
- Main-process timer for controlling the timing of tissue

basket in each position

- Delay timer - 24 Hrs. delay timer is provided for weekend and routine delay start adjustment as per user requirements

Supplied complete with:

- S.S. Basket Rotor 1 No.
- S.S. Tissue Basket 1 No.
- S.S. Tissue Capsule 24 Nos.
- One-liter capacity Glass Beaker without lip 10 Nos.
- Beaker Cover 11 Nos.
- S.S. Wax Bath each fitted with
- European make Thermostat 2 Nos.
- Suitable to work on 220 V, single phase, 50 Hz, AC supply.

Capacity: – 1 Litre.

Optional /Spare Accessories: –

- Automatic wax bath Stainless Steel.
- Glass Beaker without lip.
- Basket Rotor which rotates the Tissue Basket slowly.
- Tissue Capsule S.S. Basket S.S. with even perforations.
- Tissue Capsule S.S. 28 x 28 x 9 mm with sliding cover.
- Tissue Capsule S.S. 20 x 20 x 10 mm with sliding cover
- Tissue Capsule S.S. Circular, 36 mm dia with auto press lid.
- Divider for Tissue capsule 'S' shape.
- Divider for Tissue capsule 'V' shape.

HISTOPATHOLOGY

**MODEL NO.: YSI-102****YSI AUTOMATIC TISSUE PROCESSOR**

The Latest Model incorporates an Automatic Safety Device and locking system besides other features as in YSI-101. The Safety Device prevents the transfer of Tissue from 10th stage to 11th stage or from 11th to 12th stage, in case the wax has not melted properly due to power failure or any malfunctioning, thus protecting the unit and the Tissues.

The auto locking system checks the transfer of tissues from 12th to 1st stage to safeguard against the accidental reprocessing of the same and locks the machine in the last stage. This lock can be released by pressing of a push switch to prepare the unit for fresh use.

- Two numbers of unique Pin up & Pin down type Imported timers for programming delay as well as the main cycle with full flexibility for the user to program as per customers' requirement without any external tool or tackle or any kind of timing disc.
- Main process timer control for timing of the tissue basket in each position
- Delay timer- 24 Hrs. delay timer is provided for weekend and routine delay starting adjustable as per user requirements

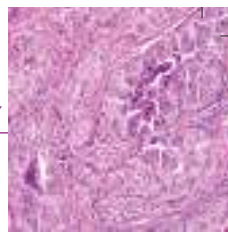
Supplied complete with:

- |  |         |
|--|---------|
| • S.S. Basket Rotor  | 1 No.   |
| • S.S. Tissue Basket   | 1 No.   |
| • S.S. Tissue Capsule  | 24 Nos. |
| • Glass Beakers of 1 It. capacity each,                      | 10 Nos. |
| • Beaker Cover   | 11 Nos. |
| • S.S. Wax Bath  | 2 Nos.  |
| • Suitable to work on 220 V, single phase, 50 Hz, AC supply. |         |

Capacity: – 1 Litre.

Optional /Spare Accessories: –

- Automatic wax bath special Type.
- Beaker without lip.
- Basket Rotor which rotates the Tissue Basket slowly.
- Tissue Capsule S.S. Basket S.S. with even perforations.
- Tissue Capsule S.S. 28 x 28 x 9 mm with sliding cover.
- Tissue Capsule S.S. 20 x 20 x 10 mm with sliding cover
- Tissue Capsule S.S. Circular, 36 mm dia with auto press lid.
- Divider for Tissue capsule 'S' shape.
- Divider for Tissue capsule 'V' shape.



**MODEL NO.: YSI-103**

**YSI AUTOMATIC TISSUE PROCESSOR**



- Super Deluxe"

This model is specially a proven design, main stay of Pathology Labs in the country and immaculately profiled. It effectively combines functional utility with aesthetic appeal. Most effective feature of the machine is that only Basket Rotor along with the moving basket Bakelite beaker cover lifts up to change the position on to the next stage of the processing cycle. All the other beakers remain covered during each change of stage, thus keeping the loss of alcohol/reagents to a minimal level by preventing evaporation.

Technical Data:

It progresses from its initial stage, to dehydration stages to its final embedding in wax, with 12 processing stages. Quite elaborate methods can easily be employed for preparing tissues for histology. The last two stages are thermostatically controlled wax baths. Programming of the machine is very simple and User friendly.

- Two numbers unique imported Process Timers - Pin up & Pin down type for programming delay as well as the main cycle with full flexibility for the user to program as per customer's requirement without any external tool or tackle or any kind of timing disc.
- Main Process Timer, controls timing of the tissue basket in each position.
- Another 24 Hrs. delay timer is provided for weekend and routine delay starting.
- If used with single load head, 36 tissues can be processed for unequal immersion time and with double load head 72 tissues can be processed using the equal immersion time. Both the basket keeps rotating to ensure better penetration. All the beakers remain covered throughout

the process. On completion of the cycle the unit automatically gets locked up to prevent double processing and the tissues remain embedded in the wax bath, until removed.

Safety Device:

- 1 The built-in safety device protects the tissues by not allowing them to shift from 10th to 11th or 11th to 12th stage in case the wax is not melted. It precludes any accident due to power failure or manufacturing of the wax baths.
  - 2 Acrylic control Panel Cover
- The equipment is supplied complete with 2 Nos. S.S. Basket Rotors, 2 Nos. S.S. Baskets, 24 Nos. S.S. Tissue capsules, 10 Nos. Borosil Glass Beakers without lip, 2 Nos. S.S. Wax Baths
- Considering the requirement of different individual users, the Model is available in different Capacities.
  - Beaker/Wax Bath Capacity: 1/2 Liter. 1 Liter. 2 Liters.
  - Suitable to work on 220V, Single Phase 50 Hz, AC supply.

Capacity : 1/2 Liter, 1 Liter, 2 Liters

Optional/Spare Accessories :

- Automatic wax bath. Special type with inbuilt safety device.
- Basket Rotor which rotates the tissue basket slowly.
- Tissue Capsule Basket S.S. with even perforations.
- Tissue Capsule S.S. 28 x 28 x 9mm with sliding cover.
- Tissue Capsule S.S. 20 x 20 x 10mm with sliding cover.
- Tissue Capsule S.S. Circular, 36mm dia with auto press lid.
- Divider for Tissue capsule 'S' shape.
- Divider for Tissue capsule 'V' shape.
- Beaker without lip.

**MODEL NO.: YSI-104****YSI AUTOMATIC TISSUE PROCESSOR "ELECTRA"**

—"Electra Model" (Micro Processor Controller Based)

Under the guidance of eminent pathologists our R & D Division has developed yet another unique model of Tissue Processor having complete Programmer logic Controller for complete cycle. Timing & stage sequence, Wax bath temperature safety system etc. are all controlled/operated by feather touch key board with Digital Display. The entire unit looks very attractive with aesthetic appeal. The data is retained in case of power failure. Front panel comprises of the key board, digital display, control switch. The PID temperature controller have been used for controlling the wax bath temperature.

Technical Data :

- The 12 stage timing sequence may be programmed for each stage for duration between 1 minute to 9 hrs. 59 minute, in steps of 1 minute.

Delay Time :

- Delay time can be programmed upto 99 hours and will be sequenced with main control.

Wax Bath Safety Control :

- Automatic Wax Bath specially designed for PID control and PT 100 sensor. It signal's the machine in stage 9, prior to

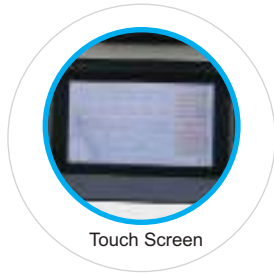
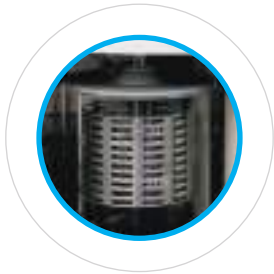
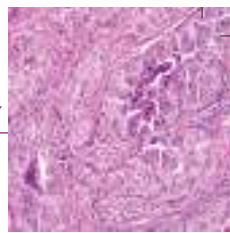
immersion in Wax and if wax is melted it automatically takes change from stage 9 to 10 and so on, but if wax is not melted due to some reasons, then machine signals "Wax not melted or temperature is not proper". When wax is melted/wax temperature is attained then only the tissue basket is allowed to immerse or rotate in the wax bath. Thus 100% safety of precious tissues.

Basket Rotor :

- Slowly rotating 2 basket rotors are also operated through the microprocessor.
- The unit is supplied complete with 2 Nos. S.S. Basket Rotors, 2 Nos. S.S. Basket, 24 Nos. S.S. Tissue Capsule, 10 Nos. S.S. beakers without lip, 2 Nos. S.S. Wax Baths (Specially designed for use with PID temperature controller).
- Suitable to work on 220 V, single phase, 50 Hz, AC supply.  
Capacity : 1 Liter, 2 Liters

Optional / Spare Accessories :

- Basket Rotor which rotate the tissue basket slowly.
- Tissue Capsule Basket of S.S. with even perforation.
- Tissue Capsule S.S. 28 x 28 x 9mm with sliding cover
- Tissue Capsule S.S. 20 x 20 x 10mm with sliding cover.
- Tissue capsule S.S. circular, 36mm dia with Auto press lid.
- Divider for Tissue Capsule 'S' shape.
- Divider for Tissue Capsule 'V' shape.
- Beaker without lip.



**MODEL NO.: YSI-104Ex**

**YSI AUTOMATIC TISSUE PROCESSOR (NEW)**



This model is a perfect combination of approved technology with modern and functionally enhanced design. Gentle specimen processing and maximum safety for tissues at all stages of the processing run, robust engineering design based on proven precision mechanics in conjunction with a modern user interface - these are the convincing features of the YSI-104.Ex

Incorporating all the features of its predecessors the Yorco semi-enclosed bench-top tissue processor is available in four configurations: the basic instrument, the basic instrument with vacuum, the basic instrument with fume control system and the basic instrument with both vacuum and fume control. This tissue processor therefore meets the individual requirements of any laboratory.

With a capacity of up to 200 cassettes, the tissue processor offers maximum safety for tissues, even if there is a power failure. It is user-friendly with an easy-to-read 5.6" touchscreen LCD and easy to operate intuitive user interface arranged in functional groups.

Specs in Addition to YSI-104

- Number of Programs: 10
- Programmable basket Hold Time for each stage.
- 5.6" Touchscreen Display

The unit is supplied complete with 2 Nos. S.S. Basket Rotors, 2 Nos. S.S. Basket, 24 Nos. S.S. Tissue Capsule, 10 Nos. S.S. beakers without lip, 2 Nos. S.S. Wax Baths (Specially designed for this model)

Suitable to work on 220 V, single phase, 50 Hz, AC supply.

Capacity : 1/2 Liter, 1 Liter, 2 Liters

Optional/Spare Accessories :

- Automatic wax bath. Special type with inbuilt safety device.
- Basket Rotor which rotates the tissue basket slowly.
- Tissue Capsule Basket S.S. with even perforations.
- Tissue Capsule S.S. 28 x 28 x 9mm with sliding cover.
- Tissue Capsule S.S. 20 x 20 x 10mm with sliding cover.
- Tissue Capsule S.S. Circular, 36mm dia with auto press lid.
- Divider for Tissue capsule 'S' shape.
- Divider for Tissue capsule 'V' shape.
- Beaker without lip.

**MODEL NO.: YSI-109****YSI AUTOMATIC LINEAR SLIDE STAINING MACHINE FOR HAEMOTOLOGY (NEW)**

## Technical Specifications :

- Number of Cups : 15 (Station 1 is for drying, Station 2 is for washing, and other 13 stations are for reagents).
- Capacity of each Cup : Approximately 350ml
- Length of Processing Time in the Cup : Adjustable within 0-59 minutes and within 0-59 seconds.
- Temperature Control Precision :  $\pm 1\%$ .
- Dripping Time : Adjustable within 0-60sec.
- Agitating frequency: Adjustable within 0-6 times/minute.
- 9 user names and passwords can stored in the system to ensure the safety of each user's staining protocol and each user can program 25 sets of staining protocols.
- Working Voltage: AC220V $\pm 10\%$  50Hz (standard model); AC110V $\pm 10\%$  60Hz.
- Power : 400W
- Dimensions : 940x295x340mm (W x D x H)
- Weight : 28Kg.

## Features:

- With its small footprint, this mini compact device can be placed near the sectioning area for optimal workflow.
- With its intuitive touch screen interface and convenient human-machine communication, operation is easy-to-learn and simple-to-use.



- Integrated touch screen with intuitive high-intelligence control system offers a full set of functions, reliable performance, and simple operation.
- The APS-coated, streamline-designed, easy-to-clean sturdy housing with high resistance to corrosion.
- 24 slides can be stained simultaneously with prompt staining process
- The slide rack can be optionally stopped either above or submerged in cup based on user's selection after the staining process ends, with beeping to alert the user.
- Enabling this device to be an ideal choice for H&E staining.
- Low noise, wear-resistant flexible transmission system using imported high-quality materials and elements to ensure stable operation and reliable performance.
- Intelligent automatic water influx/efflux/drainage system ensures sufficient washing performance at each step and improves water efficiency.
- 25 sets of staining protocols can be programmed and stored in the system with each protocol containing 30 editable steps for staining
- Operation error alert.

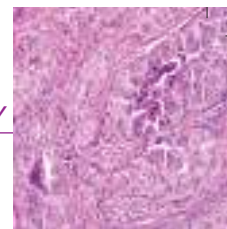
**MODEL NO.: YSI-109Ex****YSI AUTOMATIC SLIDE STAINING MACHINE**

## Technical Date

- Stations : 18 Nos. (first Station clean tank).
- Loading capacity for each basket : 47 pieces of sheer glass.
- Retention time in each Station: 1 second-99 minutes.
- Moving up and down in Station: continuous.
- Outside dimension (mm): 1400\*500\*550mm

## Product specifications :

- Ion decontaminate fitting : Ion decontaminate fitting via ionization gas to bring, ion, change and decompose the deleterious gas, to reduce the health unsafely effect. Comparing with the active carbon filter, this will not require to be replacing termly.
- It can store 4 different programs.
- Find position memory function : Each running automatically, it can find the original position and memory to make sure the right running every time.
- During running automatically, it can insert manual operation at anytime.
- It is convenient to adjust the program to make sure the good staining effect.
- During running, the program can be modified.
- The program can be add or delete a tank time.
- Alarm function : If the operation is fault, it alarm to remind. If the instrument has any trouble, it will alarm also.



**MODEL NO.: YSI-106**

**YSI AUTOMATIC SLIDE STAINING MACHINE**

- 12 Station

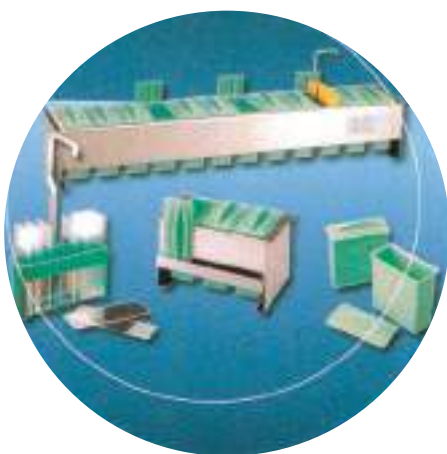
Manual Slide Staining procedure occupies considerable amount of technician's time. To accelerate the process "YSI Slide Staining Machine" was designed on modern principles for carrying out practically all Slide Staining techniques of Cytology & Histology. York Slide Staining Machine — "12 Stations", is compact and rugged equipment designed on latest technology for automatic staining of slides in different reagents according to preprogrammed chronological user selectable cycles. Throughout the process the slides are shaken (Switch selectable) for effective staining in a slide carrier (Capacity 16 Slides). The last trough i.e. 12th Station is provided with an inlet and outlet to enable washing of the residual chemicals. The unit is supplied complete with 11 Glass Staining troughs, 1 trough with inlet and outlet, 1 Slide carrier, 5 Timing Discs for chronological programming calibrated for 60 minute and 1 notch cutting plier. Suitable for work on 220 V, single phase, 50 Hz, Ac supply.



**MODEL NO.: YSI-107**

**YSI MANUAL STAINER SLIDE STAINING SET**

Simple and Cheap system to use cytological and histological staining. The set includes a twelve places stainless steel holder for dishes, twelve solvent resistant dishes with lids and a slide staining holder for 25 slides. The set for hematology includes a three place stainless steel holder, three dishes and a slide staining holder



	Description	Dishes
YSI-107(HS)	Hematological Set	3
YSI-107	Slide staining set	12

ACCESSORIES AND REFILL		
	Description	Dishes
	Stainless steel holder-12	1
	PEPT dish with lid	12
	TPX Transparent dish with lid	12
	Slide stainless holder for 25 slides	6
	Slide stainless holder with plastic handle	6
	Double slide staining holder (for 50 slides)	1

HISTOPATHOLOGY



**MODEL NO.: YSI-105****YSI TISSUE PROCESSING UNIT**

- Single Unit

Compact model, suitable for use in small Laboratories. Supplied with One S.S. Basket Rotor, One S.S. Tissue Basket, One S.S. Wax Bath, 24 Nos. S.S. Tissue Capsules, 6 Nos. S-type Dividers.

Suitable to work on 220 V, single phase, 50 Hz, AC supply.

**MODEL NO.: YSI-111****YSI BONE DECALCIFIER DIGITAL**

-Latest Model Designed on International Pattern  
Suitable for use in Histology for decalcification of the bone tissue by electrolytic action for easy and precise sectioning. Through the combination of heat & fluid agitation, this instrument provide a method of decalcifying bone in preparation for sectioning & cellular staining. Decalcification is completed in significantly reduced time as compared to manual process, to ensure good staining characteristics. Nitric or Hydrochloric acid of not more than 5% conc. is generally used.

Basket movement is provided by an electric motor, which raises & lowers the basket and concurrently rotates it at slow speed for thorough solution action.

A heating jacket vessel in the base of the support-stand heats the solution. Digital Temperature Controller with Display is provided with timer for accurate control of solution temperature. Supplied complete with plug & cord, the units is suitable for operation at 220 V, single phase, 50 Hz, AC supply.

**MODEL NO.: YSI-112****YSI PARAFFIN TRIMMER**

YSI Block Trimmer is used to remove excess wax from the outside of a tissue cassette and to clear the edge of the cassette of excess wax after paraffin embedding.

This device features a ridged heating surface where the temperature can be adjusted in a range from ambient to 90°C.

By sliding the outside of the block across the heated surface, excess wax on the outside of tissue cassette will melt and flow away from the grooves and the hole at the lowest point flows into a waste tray. This block trimmer can quickly remove paraffin in order to properly seat the block in the quick-release clamp or microtome vise to achieve the best section quality. This compact and well-designed device can achieve easy and prompt block trimming with precise temperature control by micro-computer chips and without messy wax sticking to the Teflon coated surface.

Technical Specifications:

\* Working area: 230×160mm

\* Temperature Range: Continuously adjustable within 0-90°C.

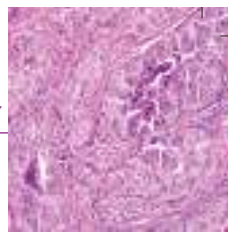
\* Temperature Control Precision: ±1

\* Working Voltage: 220V±10%50HZ or 110V±10% 50/60Hz

\* Power: 150W

\* Dimensions: 255×175×155mm (W×D×H)

\* Weight: 3 kg



**MODEL NO.: YSI-055**

**YSI MANUAL ROTARY  
MICROTOME (NEW)**

For Highest Performance, Correctness and Soothe Stability is vital in manual microtome and YSI-055 can live up to workload requirements of even the demanding laboratories. The superior precision of new accessories will add up expediency to block to knife approach as well as specimen point of reference.

**Safety During Sectioning**

Protection is assured by incorporated black finger protection guard of the knife holder that exceptionally safeguards the blade edge. When used correctly the integrated finger protection guard rules out potential injuries because it can even remain on the blade edge during sectioning.

**Well-located Storage Area**

An incorporated storage tray makes certain subsidiary tools are in hand at all the times

**Trouble Free operation**

Ergonomics and user comfort were key concern for the placement of coarse feed wheel, which is located close to the operator. The mechanical trimming function, conveniently

positioned next to coarse feed wheel, purge the need to turn coarse feed wheel during trimming

Spacious Section waste tray

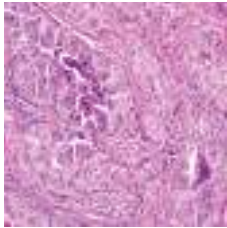
The spacious section waste tray consistently gathers sectioning wreckage

Accurate specimen orientation with clear zero reference point

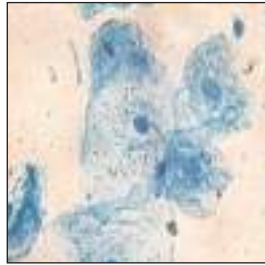
This new orientation technique sets innovative standards of precision and is very effortless to operate. Calibrated controls make it easy to fiddle with a specimen to an exact zero position specified by assessable variable on the x/y axis for re-cuts

Imaginative knife holder adjustment

The complete width of the knife could be used by using straight forward blade fastening mechanism. Using the complete knife edge is cost effective, particularly in laboratories with high specimen throughput.



HISTOPATHOLOGY



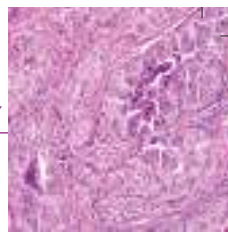
Technical Data:

Ranges of section thickness	0.5 mm to 60mm
Setting Values	from 0.5 mm to 2 mm in 0.5 mm increments from 2.0 mm -10 mm in 1mm increments from 10 mm - 20 mm in 2mm increments from 20 mm - 60 mm in 5mm increments
Section thickness	Viewing Window
Coarse Feed	Manual via coarse feed wheel
Trim Setting	1mm 60mm
Horizontal Stroke	Approx. 30 mm
Vertical Stroke	Approx. 60mm
Maximum Specimen Size	50mm (L) x 60mm(H)x 40mm(W)
Specimen Orientation	Horizontal:8°, Vertical:8°, Z:360°
Dimension of basic instrument	
Width (including handweel)	455 mm
Depth (including section waste tray)	510 mm
Height (with storage tray installed on housing)	305 mm
Weight (With accessories)	Approx, 26 Kg.

General:

- Compact Ergonomic Overall Design
  - Accurate Specimen orientation with zero-point reference
  - User safety incorporated into all aspects of the instruments
  - Ergonomically located coarse feed wheel for fatigue free operation
  - Extremely smooth - running hand wheel
  - Precise knife holder lateral adjustment ensures that the entire width of the blade edge can be used
  - Single handed operation specimen clamps
  - Universal Knife holder base for different sizes of knives.
  - Disposable blade holder with incorporated safety finger protection guard
  - Spacious section waste tray
  - One piece easy to clean hosing
  - Automatic retraction
- Supplied complete with:-
- Cassette holder
  - Knife holder base
  - Standard knife holder.
  - Object orientation unit
  - Section waste tray
  - Disposable blade (Pack of 50 Blades)





**MODEL NO.: YSI-060**

**YSI SEMI AUTOMATIC ROTARY MICROTOME (NEW)**

Fully Motorised, Programmable Rotary Microtome  
The New YSI-060 Semi-Automatic rotary microtome characterizes the faultless combination of cost effective competence and user comfort. It is the instrument of choice for clinical histology and histopathology application, as well as for industry quality assurance.

Manual sectioning is enhanced by the high precision motorized specimen feed, which fallout in efficient operation with utmost section reproducibility. Improved user comfort results in maximum workspace efficiency and high throughput.

Well located storage Area

An incorporated storage tray makes certain subsidiary tools are in hand at all the times

Safety During Sectioning

Protection is assured by incorporated black finger protection guard of the knife holder that exceptionally safeguards the blade edge. When used correctly the integrated finger protection guard rules out potential injuries because it can even remain on the blade edge during sectioning.

Contented Operation

All functions are controlled via touch sensitive buttons located on both sides of the block holder.

Trouble Free Operation

Ergonomics and user comfort are key concern for the placement of coarse feed wheel, which is located close to the operator. The mechanical trimming function, conveniently positioned next to coarse feed wheel, purge the need to turn coarse feed wheel during trimming

Spacious Section Waste Tray

The spacious section waste tray consistently gathers sectioning wreckage

Accurate Specimen orientation with clear zero reference point

This new orientation technique sets innovative standards of precision and is very effortless to operate. Calibrated controls make it easy to fiddle with a specified by assessable variable on the x/y axis for re-cuts

Imaginative Knife holder adjustment

The complete width of the knife could be used by using straight forward blade fastening mechanism Using the complete knife edge is cost effective, particularly in laboratories with high specimen throughout.

HISTOPATHOLOGY



HISTOPATHOLOGY

Technical Data  
Section Thickness  
0.5 mm - 90mm  
Setting Values

Section Thickness Setting range  
from 0.5 mm - 1 mm in 0.5 mm increments  
from 1mm -99 mm in 1mm increments

Trimming Section  
Thickness setting Range  
Setting Values

0.5 mm - 99mm  
from 0.5 mm - 1mm in 0.5 mm increments  
from 1mm - 99 mm in 1mm increments

Specimen Retraction  
Motorized Operation  
Horizontal Specimen Feed  
Vertical Specimen Feed  
Sectioning Modes  
Maximum Specimen Size  
Specimen Orientation  
Operating Voltages

Varying with section speed  
Approx. 30mm  
Approx. 60mm  
1 Manual Mode  
50mm(L)x60mm(H) x 40mm(W)  
Horizontal:8°, Vertical:8°, Z:360°  
Nominal Supply Voltages  
100V/120V/230V/240V  
50/60 Hz.

Nominal Frequency  
Dimensions basic instruments  
Width (including handweel)  
Depth (including waste tray)  
Height (with storage cover)  
Weight (with accessories)

390mm  
510mm  
305mm  
Approx, 26 Kg.

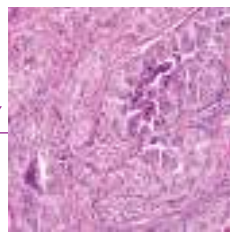
General

- Compact Ergonomic Overall Design
- Accurate Specimen orientation with zero-point reference
- Easy shift between trimming and sectioning operation
- Two motorized forward specimen coarse feed speeds
- Automatic Specimen retraction
- Section – Handed function universal cassette clamp
- Absolutely new knife holder replica for disposable blades, with finger guard in contrasting color
- User safety incorporated into overall design
- Smoothing – running hand wheel with incorporated quick – lock method
- Accurate knife holder lateral movement
- Ergonomically optimized hand wheel handle
- Communication display incorporated in instrument housing enclosed micrometer mechanism
- Enclosed micrometer mechanism
- Spacious section waster tray
- Wide range of accessories
- Automatic retraction

Supplied complete with: -

- Cassette holder
- Knife holder base
- Standard knife holder.
- Object orientation unit
- Section waste tray.
- Disposable blade (Pack of 50 Blades)





**MODEL NO.: YSI-062**

**YSI FULLY MOTORIZED PROGRAMMABLE ROTARY MICROTOME (NEW)**

Fully Motorized, Programmable Rotary Microtome YSI offers a microtome that can satisfy all of your laboratory's requirements: the fully motorized YSI-062 rotary microtome. It is the top-of-the-line-product in YSI rotary microtome series and is designed to provide superior sections of multitude of the specimen types with ease. Its outstanding technology allows it to be used for semi-thin to thick sectioning of soft or hard specimens: routine as well as special biomedical applications.

**Well Located Storage Area**

An incorporated storage tray makes certain subsidiary tools are in hand at all the times.

**Safety During Sectioning**

Protection is assured by incorporated black finger protection guard of the knife holder that exceptionally safeguards the blade edge. When used correctly, the integrated finger protection guard rules out potential injuries because it can even remain on the blade edge sectioning.

**Contented Operation**

All functions are controlled via touch sensitive buttons located on both sides of the block holder.

**Spacious Section waste tray**

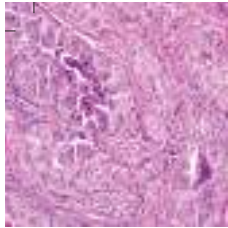
The spacious section waste tray consistently gathers sectioning wreckage

Accurate specimen orientation with clear zero reference point

This new orientation technique sets innovative standards of precision and is very effortless to operate. Calibrated controls make it easy to fiddle with a specimen to an exact zero position specified by assessable variable on the x/y axis for re-cuts

**Imaginative knife holder adjustment**

The complete width of the knife could be used by using straightforward blade fastening mechanism. Using the complete knife edge is cost effective, particularly in laboratories with high specimen throughput.



HISTOPATHOLOGY



General

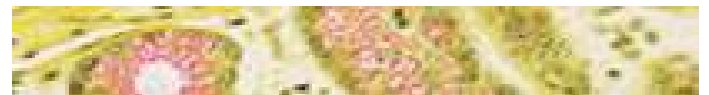
- Compact, Ergonomic Overall Design
- User safety incorporated into the microtome and accessories
- Intuitive control panel
- Automatic, variable specimen retraction, depending on sectioning speed
- Two motorized forward specimen coarse feed speeds
- Two separate programs for trimming and sectioning
- Speed control through the cutting window for enhanced efficiency
- Communication display in instrument housing
- Section thickness setting of 0.5um to 100um Section thickness totalizer
- Smooth running handweel with incorporated quick - lock mechanism
- Ergonomically optimized handweel handle
- Enclosed micrometer mechanism
- Precision specimen orientation with zero-point reference
- Spacious section waste tray
- Wide range of accessories for special applications

Supplied Complete with

- Cassette holder
- Knife holder base
- Standard knife holder
- Object orientation unit
- Section waste tray
- Microtome knife 15cm

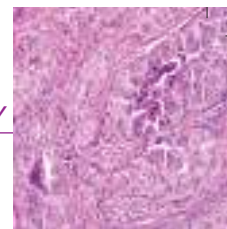
Supplied complete with: -

- i. Cassette holder
- ii. Knife holder base
- Standard knife holder.
- Object orientation unit
- Section waste tray.



Specifications:

Section Thickness	
Section Thickness Setting range	0.5um 99um
Setting values	from 0.5um - 1um in 0.5um increments from 1um - 99um in 1um increments
Trimming Section	
Thickness Setting Range	0.5um 99um
Setting values	from 0.5um - 1um in 0.5um increments from 1um - 99um in 1um increments
Specimen Retraction	
Motorized Operation	Varying with section speed
Horizontal Specimen Feed	approx. 30mm
Vertical Specimen Feed	approx. 60mm
Sectioning Modes	3 total 1 manual mode 2 motorized modes (continuous and single)
Maximum specimen size	50(L) x 60(W) x 40(H) mm (1.96 x 2.36 x 1.57 in.)
Specimen Orientation	H o r i z o n t a l : 8 0 , Vertical:80,Z:3600
Operating Voltages	
Nominal Supply Voltages	100 V/120 V/230V/240V
Nominal Frequency	50/60 Hz
Dimensions basic instruments	510 x 390 x 305 mm
Weight (with accessories)	approx. 37 kg



**MODEL NO.: YSI-114**

**YSI PRECISION ROTARY  
MICROTOME**

Well-designed features for precise and accurate serial sectioning, with feed setting visible from front, improved locking device and counter balanced wheel. Light weight hinged cover provides easy access to internal parts for cleaning and oiling. Feed is adjustable from 1 to 50 microns in steps of 1 micron. Free up and down movement of Block Holder clamp. Automatic restricted total excursion of 28 mm by disengaging the feed mechanism to prevent jamming. Ball and flange Block Holder clamp provides flexible orientation of object piece. Takes specimen up to 32×27 mm on stem of block holders. Knife holder allows for 120 mm to 180 mm long knife. Cutting angle is adjustable through 30 degrees. Two levers release knife holder for resetting angles and a third lever releases the entire assembly for movement on slide way to adjust horizontal distance from object. Latest cam system eliminates the conventional cord system for feeding, resulting in better section cutting and improved

efficiency of the machine.

Supplied complete with the following accessories:

- one knife 120 mm long with back and handle in Plastic box.
- 3 type of Block Holders, one each size.
- One bottle of Lubricating Oil .
- Rexine cover

Optional /Spare Accessories :

- Special Alloy Steel Knife (YSI-136) Size: 120mm, 150mm, 180mm, 200mm.
- S.S. Back for Knife (YSI-137)
- Block Holder/Specimen Holder (YSI-140) Size : (Dia) 37mm, 25mm, 20mm.
- Embedding Moulds made S.S. (YSI-141)

Size:	a.	L	x	W	x	D
	a.	16	x	16	x	12mm
	b.	22	x	22	x	12mm
	c.	32	x	25	x	12mm

L-Moulds made of brass (YSI-143)

Size :	a.	L	x	W	x	D
	a.	37	x	25	x	15mm pair
	b.	50	x	25	x	15mm pair
	v.	75	x	30	x	19mm pair

- Disposable Imbedding Ring (YSI-142 & 142A)
- Disposable Knife a pack of 50 blades Low Profile or High Profile.
- Disposable Blades Holder suitable to use with any type of microtome Low Profile Blade or High Profile Blade.



**MODEL NO.: YSI-115****YSI PRECISION ROTARY MICROTOME  
LIPSHAW TYPE**

## Salient Features:

- Ergonomic Design
- Removable hand rests
- Back Pressure Plate
- Low Maintenance and backlash free micrometer feed system
- Cylinder guide system for horizontal movement
- Manual sectioning via ultra-smooth counterbalanced handwheel rotation
- Vertical stroke : 60mm (Approx)
- Available with clockwise or counter operation of the coarse feed wheel.

The standard for laboratory routine. Most elegant and sturdy, latest range of incredibly reliable Microtomes. Constructed for excellent precision and quality sectioning. Unique adjustable block holder, allowing technicians to alter the block angle for poorly embedded tissue. Rugged, sturdy construction, easy to operate, maintain and quick to clean. You can setup these instruments in any configuration for both routine and special application.

The unit is provided with effortless manual sectioning via a counter balanced exceptionally smooth - running wheel,

automatic feed mechanism and feed release. Light M.S. Powder Coated hinged cover, protects the internal mechanism. Heavy cast base plate fitted with rubber pads to provide better grip. Sliding mechanism is extra-large for holding harder tissues more precisely. Smooth operation and extremely versatile for uniform serial sectioning. Adjustable from 1 to 50 microns in steps of 1 micron from front side convenient to adjust and see side by side from front view. Feed mechanism is independent of other movements.

Supplied complete in all respects with following accessories:

- Knife 120mm having back and handle in Plastic box 1No.
- 3 types of Block holders 1No each
- Bottle of lubricating oil and rexine cover 1 No.

Optional/Spare Accessories :

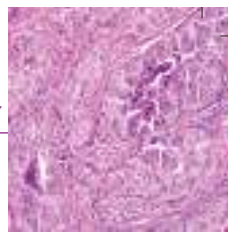
- Special Alloy Steel Knife (YSI-136) Size: 120mm, 150mm, 180mm, 200mm.
- S.S. Back for Knife (YSI-137)
- Block Holder/Specimen Holder (YSI-140) Size : (Dia) 37mm, 25mm, 20mm.
- Embedding Moulds made S.S. (YSI-141)

Size:	a.	L	x	W	x	D
	a.	16	x	16	x	12mm
	b.	22	x	22	x	12mm
	c.	32	x	25	x	12mm

L-Moulds made of brass (YSI-143)

Size :	a.	37	x	25	x	15mm pair
	b.	50	x	25	x	15mm pair
	v.	75	x	30	x	19mm pair

- Disposable Imbedding Ring (YSI-142 & 142A)
- Disposable Knife a pack of 50 blades Low Profile or High Profile.
- Disposable Blades Holder suitable to use with any type of microtome Low Profile Blade or High Profile Blade.



**MODEL NO.: YSI-121**

**YSI CRYOSTAT MICROTOME  
AUTOMATIC**

- Deluxe Model with Motorized section cutting with temperature range from -40°C.

It provides a rapid and easy means for the sectioning of natural tissue from 2 to 20 microns in step of 2 microns without distortion for high quality microscopic examination. Sections have the high resolution of cytological details required for pathological diagnosis, histochemistry, fluorescence, biochemistry, microscopy etc. Technique is simple and easy to learn. To withstand condensation inside the chamber, in built Rotary Microtome is made of entirely rustproof material fitted with anti roll device to avoid curling of sections. Plastic plate is adjustable in all directions.

Cryostat temperature ranges up to -30°C as selected by Solid State Temperature Controller Cum Digital Indicator and is maintained within  $\pm 2^\circ\text{C}$  of set temperature and maintained by hermetically sealed compressor system.

Control panel includes Digital Temperature Indicator cum Controller; Defrost Timer Main Switch, Delay Timer and Cooling Indicator and voltmeter.

Inner chamber is made of thick gauge stainless steel. Clear plastic cover, slip in type, at front opening suffices for working access to microtome. Small fluorescent tube light is fitted inside the chamber which switches on automatically whenever plastic door opens to facilitate easy visibility. Microtome hand wheel provided outside the chamber on right hand side for easy operation.

Cabinet is of heavy gauge steel with powder coated exterior finish. Four castor wheels fitted at bottom provide easy mobility for use in various locations and for storage when not in use.

Supplied complete with rustproof in-built microtome, refrigeration unit, transparent door, door cover, four demountable specimen holders, one bottle of low



temperature oil and one microtome knife 120 mm long with back and handle in Plastic box, cord and plug.

Also supplied with one pack of 50 Disposable blades of "Feather" Japan Make. Suitable to work on 220 V, single phase, 50 Hz, AC supply.

Optional Accessories: –

- Voltage Stabilizer (3 KVA)
- Disposable Blade Holder
- Suitable to use with Low Profile or High Profile Blade.
- Block Holder
- Low Temperature Oil
- A Pack of 50 Blades Low Profile or High Profile.
- Disposable Knife.

Spare Accessories

- Block Holder
- Low Temperature Oil.

**MODEL NO.: YSI-121Ex****YSI CRYOSTAT MICROTOME  
AUTOMATIC**

The Cryostat Microtome is used for cutting thin sections of fresh, frozen tissue. Sections have the higher resolution of cytological details required for pathological diagnosis and laboratory works.

Operation manually or automatically

1. Control System : Touch-tone operation, Parameters are easily displayed (temperature, thickness of slice, thickness of repaired slice, real time, and defrosting time) on the LCD. The machine counts down for 5 mins before the compressor starts to work.
2. Five freezing points : Dual-compressors control system, freezing head, freezing head can be set at different sectioning temperature according to different tissue.
3. Safety: Low temperature also can be done with high quality to avoid low temperature injury.
4. System protection : The fast freezing system can be switched off manually, and will switch off automatically after working for 8 hours.
5. Defrosting system : Automatic and manual defrosting function. The user can set the time interval according to local temperature. The defrosting function can be switched off automatically.
6. Mechanism : Excellent mechanical structure and excellent mechanical performance; section cutting is accurate, flat and stable; there is a fine anti-curling function.
7. The machine has UV-lamp sterilization function: The freezing chamber is provided with a tube for cleaning convenience.

**Functional Features:**

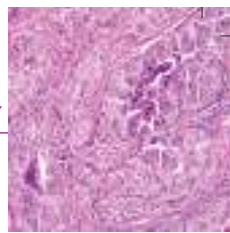
1. Range of section thickness : 0.5-100µm
2. Horizontal specimen feed: 28mm
3. Vertical specimen stroke : 60mm
4. Trimming thickness range: 1-300µm
5. Freezing chamber temperature :  $-30^{\circ}\text{C} \pm 5^{\circ}\text{C}$
6. Freezing specimen table temperature :  $-45^{\circ}\text{C}$
7. Freezing head temperature :  $-50^{\circ}\text{C} \pm 5^{\circ}\text{C}$
8. Freezing knife temperature:  $-35^{\circ}\text{C} \pm 5^{\circ}\text{C}$



8. Universal knife holder system: Knife holders for standard blades and for disposable blades.
9. Insulation and visible glass : It is convenient for watching the procedure.
10. 10 specimen's storage spaces and real time mode.
11. Motorized head forward and reverse; also there are two speed rears.
12. Two specimen tables can set two different temperatures and set the number of the sections.
13. Counting function : Counting time

**Technical Parameters:**

1. Working Voltage : 220 V
2. Power Draw : 650VA
3. Dimensions (L\*W\*H): 760\*640\*110mm
4. Weight : 120kg



**MODEL NO.: YSI-122**

**YSI TISSUE EMBEDDING STATION**



- Tissue Embedding Station

For the past 40 Years the YSI name has been acknowledged nationwide for the superior performance technology in laboratory instrumentation. The new YSI-122 keeps up to that excellence in a unique manner: compact size, user friendly operation and commendable comfort and safety standards set apart this tissue embedding station as much as the contented level of the working surface and the ergonomic design. Substantial work spared with temperature – controlled hand rests to provide safeguard against burn injuries gives greatest freedom of movement to the user. The YSI-122 also offers wide range of accessory options.

Individually heated paraffin dispensing system

The paraffin dispensing system with incorporated filter ensures continuous, reproducible flow, with 8 flow rate settings (optional). Paraffin dispensing can be set in motion manually, via foot switch or paraffin mold handle. To fill large molds the dispensing handle may be pulled back.

Voluminous paraffin collecting tray

Excess paraffin from the separately heated work surface drips straightforwardly into the extra – deep paraffin collecting tray.

Ergonomically designed : Mold Warmer and cassette bath

The Mold warming compartment can be opened widely for easy access and can be heated up to 70°C. The removable, easy to clean cassette bath can hold more than 100 Cassettes.

Menu – Driven for user friendliness with an advantage of setting every parameter with its own individual button, with 7 day programmable timer. All instrument functions including the temperature of paraffin reservoir, cassette bath working surface, mold warmer and the automatic starting time are individually programmable by just pressing a button

The easy to read 7 segment display shows all the essential usage and programming parameters, also errors.

A quick look

- Bench – top unit with well – built frame structure

- Easy – to – Clean

- 3 Ltr paraffin container, temperature setting range 50°C to 70°C
- Voluminous paraffin collecting tray
- Substantial cold plate for at least 60 Blocks
- Menu- driven through microprocessor
- Programmable starting time
- Activation of paraffin flow manually, via foot switch or using the mold in conjunction with a pressure clip
- Working surface, cassette bath, mould warmer and p a r a f f i n reservoir with individual temperature – adjustable.

Voluminous paraffin collecting tray

Excess paraffin from the separately heated work surface drips straightforwardly into the extra – deep paraffin collecting tray.

Five heated areas, including Paraffin Chamber, Paraffin Dispenser, left & right Thermal Storage Compartments, and heating plate (working area), are individually controlled and work independently without interference from each other.

Flexible heating mechanism overcomes the shortcomings of traditional technology that can result in excessive temperature difference. System provides fast heating and precise temperature control. In a addition, the dual-protection from overheating is safe, reliable & energy saving.

Menu – Driven for user friendliness with an advantage of setting every parameter with its own individual button, with 7 day programmable timer.

All instrument functions including the temperature of paraffin reservoir, cassette bath working surface, mold warmer and the automatic starting time are individually programmable by just pressing a button

The easy to read 7 segment display shows all the essential usage and programming parameters, also errors.

Capacities :-

Paraffin reservoir	: 3L
Cassette Bath	: Ca. 100 Cassettes
Cassette Tray	: 8 Cassettes

Temperature Range of Functional Units :-

Paraffin Reservoir	: 50°C-70°C, Steps of ± 5°C
--------------------	-----------------------------

Container for Embedding Moulds :-

(Mould Warmer)	: 50°C- 70°C Steps of ± 5°C
Cassette Bath	: < 50°C- 70°C
Working Surface	: 50°C- 70°C
Cold Plate	: 0°C
Forceps Holder, right	: 70°C
Paraffin dispenser & Pump	: 50°C- 70°C, depending on reservoir temperature

Power Draw	: 1000VA
------------	----------

Mains Connection Voltage	: 230V/50 Hz.
--------------------------	---------------

And Frequency

Operating Temperature Range:	: 18- 40°C
------------------------------	------------

Dimensions	: 915(W)x400(H)x 622(D)MM
------------	---------------------------

Weight	: 60 Kg.
--------	----------

**MODEL NO.: YSI-122Ex****YSI TISSUE EMBEDDING & COOLING SYSTEM**

## TECHNICAL SPECIFICATIONS:

- Paraffin Chamber V : > 6 liters.
- Temperature Ranges: RT -85°C
- Temperature control Precision : ± 1%
- Paraffin flow control : Paraffin flow control via finger touch plate and optional foot pedal,
- Fully programmable ON/OFF Control allows automatic system start and stop anytime weekly
- Dimensions of Paraffin Chamber : 495 x 132 x 95mm(WxDxH).
- Dimensions of Thermal Chamber (each of two); 240 x 160 x 50mm (W x D x H).
- Working area of Embedding Module: 540mm x 93mm
- Dimensions of small cold plate: 60x50mm
- Working Voltage : AC 220V± 10% 50Hz
- Power : 1000W
- Dimensions : 670 x 575 x 395mm (W x D x H)
- Net Weight : 39kg



## Cooling System:

- Temperature Ranges of Cryo Module : 0 to -20°C
- Temperature setting of Cryo Module : the Optional Working Temperature is approximately - 10°C, and the temperature is under delay protection.
- Dimensions of Cryo Module :315x380mm
- Working Voltage : AC 220V ±10% 50Hz
- Power : 300W
- Dimensions : 710x350x390mm (WxDxH)
- Net Weight : 25Kg

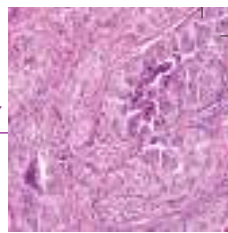
**MODEL NO.: YSI-123****YSI WAX DISPENSER ALONG WITH PREHEAT WARMER**

## TECHNICAL SPECIFICATIONS:

- Paraffin Flow Control : Paraffin flow control via finger touch plate and optional foot pedal.
- Fully programmable ON/OFF Control allows automatic system start and stop anytime weekly.
- Dimensions of Paraffin Chamber : 495 x132x95mm (W x D x H)
- Dimensions of Thermal Chamber (each of two) : 240 x160x50mm (W x D x H)
- Working area of Embedding Module : 540mm x 93mm
- Dimensions of small cold plate : 60 x 50mm
- Working Voltage : AC220V

**MODEL NO.: YSI-124****YSI BLOCK COOLING PLATE**

- (a) Cooling Surface 315 x 380mm (Approx.), recessed, suitable for approx. 70-80 Cassettes, to -10°C
- (b) Dimensions : 400mm x 580mm x 290mm
- (c) Perspex Cover (Optional)
- (d) Power : 300W
- (e) Working Voltage :AC 220V±10% 50Hz



**MODEL NO.: YSI-126**

**YSI AUTOMATIC KNIFE SHARPENER**

—Arthur Thomas Type

With Miller assembly as its heart, the unit is unmatched in performance even by the most skilled hard honing and stropping. It permits to set exact angle of bevel on knife edge. A perfect cutting edge is obtained by sharpening the knife on this unit. Salient features of the unit include easy operation, automatic reversing of knife at regular intervals for an equal bevel angle on both sides of its edge; eliminates the need for resurfacing the glass plate as the knife execution is across the full radius of the rotating plate. The unit comprises of the reinforced sheet metal housing with hinged doors at front and side to facilitate easy cleaning and maintenance. It has a constant speed motor to rotate the ground glass plate 500 mm dia x 12 mm thick at constant speed. Knife upto the size of 300 mm x 13 mm can be easily sharpened on the unit. A lubricant reservoir needed for grinding and polishing is supported on top frame.



Top platform is provided with a drain to remove the used lubricant. A sector type metal scale graduated from 0 to 25° in 1° division indicates the exact angle between the bevel and center line. The unit is powder coated and complete in all respects and has aesthetic looks. Supplied with rexine cover, cord and plug without micro abrasive. Suitable to work on 220 V, single phase, 50 Hz, AC supply.

**MODEL NO.: YSI-128**

**YSI AUTOMATIC KNIFE SHARPENER**

—A.O. Spencer Type

The unit automates the process of manual knife sharpening to eliminate unevenness of the surface and ensures an equal bevel angle by moving the knife to and fro and automatically reverses the same at regular intervals. The unit consists of sturdy housing having a synchronous motor coupled with a gear system to achieve the task.

The unit is also provided with a transparent hinged cover to prevent deposition of dust etc. on the glass plate or moving parts. The knife holder along with knife comes in contact with the ground glass honing plate smoothly to prevent any damage to its surface while reversing it. An adjustable 0-60 minutes timer to do sharpening for a preset duration is a standard feature. Knives of length upto 170 mm and thickness 12 mm can be accommodated on the unit. The entire unit comes in an attractively powder coated finish.



The unit is supplied complete with, two honing plates, cord and plug, but without micro abrasive. Suitable to work on 220 V, single phase, 50 Hz, AC supply. Optional Accessories (YSI-126, 128)

- Micro Abrasive
- Spare Accessories (YSI-126, 128)
  - Glass plate
  - Block Holder

**MODEL NO.: YSI-129**

**YSI MICRO ABRASIVE**

Most effective for efficient sharpening of microtome knives manually or on automatic knife sharpeners. These enhance the life of ground glass honing plate and assure perfectly sharpened knife edges :

Coarse : YA 2000 Set of two bottles

Fine YA 3000 each of 200 gms.



**MODEL NO.: YSI-134****YSI DISPOSABLE BLADE  
HOLDER (NEW)**

Suitable for holding low & high profile knife, International design can be fitted on all types of Rotary Microtome. Made of high quality stainless steel.

**MODEL NO.: YSI-135****YSI DISPOSABLE BLADE  
“FEATHER JAPAN” MAKE (NEW)**

- Low Profile
- High Profile

Suitable for soft & hard tissue as well as for extremely thin slices, short trimming time with corresponding clearance angle.

Salient Features:

- International Design.
- Long Life.
- Easily Replaceable
- Made of Superior Quality Stainless Steel

Technical Features:

Material : Stainless Steel  
Length : 80mm  
Cutting Angle : 35°

Pack of 50 pcs. packed in a unique dispenser designed to dispense one blade at a time.

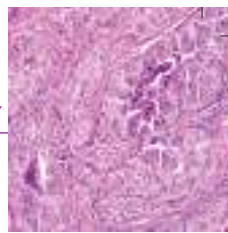
**MODEL NO.: YSI-136****YSI MICROTOME KNIFE**

- A.O. Spencer Type,  
Made of Special Alloy Steel Supplied with handle and honing guide in sturdy, elegant Plastic box.  
Size : 120mm, 150mm, 180mm, 200mm

**MODEL NO.: YSI-137****YSI BACK FOR MICROTOME KNIFE**

Made of Stainless steel.

Size : 120mm, 150mm, 180mm, 200mm



**MODEL NO.: YSI-140**

**YSI BLOCK HOLDER**

Specimen Holder used for holding the wax block for cutting sections on Microtomes. Made of Brass Alloy duly nickle plated, with deep screwing to hold block firmly.

Sizes : (Dia) 37 mm, 25 mm, 20 mm



**MODEL NO.: YSI-141**

**YSI TISSUE EMBEDDING MOULDS**

Made from Stainless Steel, very convenient and simplified method for the preparation of tissue moulds. Eliminates need for trimming of blocks.

L x W x D

Size:

- a. 16 x 16 x 12 mm
- b. 22 x 22 x 12 mm
- c. 32 x 25 x 12 mm



**MODEL NO.: YSI-141A**

**YSI TISSUE EMBEDDING MOULDS S.S. EUROPEAN DESIGN**

L x W x D

Size:

- a. 11 x 11 x 8 mm
- b. 22 x 20 x 9 mm
- c. 32 x 19 x 12 mm



**MODEL NO.: YSI-142**

**YSI EMBEDDING RINGS (DISPOSABLE)**

Made of plastic for use with all size of Tissues Embedding Moulds.

L x W x D

Size:

- a. 25 x 25 x 12 mm

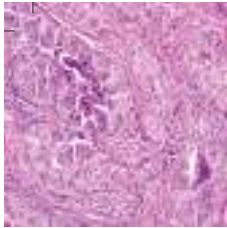
**MODEL NO.: YSI-142A**

**YSI EMBEDDING RINGS (DISPOSABLE)**

- Regular
- Biopsy
- Jumbo
- Reusable Lid







HISTOPATHOLOGY



**MODEL NO.: YSI-143**

**YSI- L-MOULDS EMBEDDING MOULDS**

Made of Brass Alloy metal, moulded, smooth surface 6 to 8mm well thickness to distribute the heat uniformly to make the block very even.

Size: 37 x 25 x 15mm pair  
50 x 25 x 15mm pair  
75 x 30 x 19mm pair

**MODEL NO.: YSI-144**

**YSI PARAFFIN DISPENSER**

Paraffin Dispenser is used in Histopathology, Forensic Medicine and Anatomy Lab. where wax embedded moulds or blocks are prepared. Specially designed for use where large volume of paraffin is required, to facilitate disposing of wax for embedding purpose. A tap with temperature control is provided so that wax is not stuck to the tap. The Wax flow freely when melted.

Temperature is controlled by imported thermostat and is kept at approx 65°C. Inner & outer wall are made of Aluminum dully insulated for ease to operate. Table model operates on 230 Volts. I phase, AC supply Melting time of wax is one hour (Approx)

Capacity : 2.5Ltr.



**MODEL NO.: YSI-146**

**YSI- HONE**

Made of ground glass, in wooden box. Supplied with bottle of Abrasive powder.

Size : 300 x 75mm



**MODEL NO.: YSI-144D**

**YSI PARAFFIN DISPENSER DIGITAL**

2 liters capacity with wax dispensing system & digital control, other details as per YSI-144



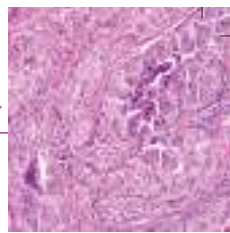
**MODEL NO.: YSI-147**

**YSI LEATHER STROPS**

- Flock Type Cemented on Block

Size : 300 x 64mm





**MODEL NO.: YSI-132**

**YSI SLIDE WARMING TABLE**

For heating slides to a uniform temperature just below the melting point of wax to provide maximum flattening without damaging the section. Top plate is mounted on an insulated metal frame. It is fitted with Imported thermostat to control surface temperature from ambient to 70°C. A depression has been provided on the top surface to house a thermometer to indicate the surface temperature. Supplied complete with pilot light, cord and plug, but without thermometer. Suitable to work on 220 V, single phase, 50 Hz, AC supply.

Top Plate Size: Length x Width  
600 mm x 150 mm



**MODEL NO.: YSI-132D**

**YSI SLIDE WARMING TABLE**

YSI Slide Warming Table is a rectangular flattening table intended for clinical histopathology with a Jet Black Aluminum Surface ensuring very high thermal conductivity rates & exceptional resistance to mechanical exploitations temperature ranging from ambient to 70°C can be selected. The programmed as well as set temp are displayed on the instrument & set values memorized by a built-in battery backup system. The instrument is modern & Complimentary to the Yorco Histology Product line.

Top Plate Size: Length x Width  
300 mm x 200 mm  
360 mm x 350 mm



**MODEL NO.: YSI-138**

**YSI GROSSING BOARD**

Dissection board for use with routine and high risk specimens.

- \* Quick and easy cleaning
- \* Ease of specimen measuring due to laser-marked stainless steel rules.
- \* Containment edge to avoid liquid dispersion
- \* Made of white polypropylene

Plate Size: Length x Width  
400mm x 350mm Thickness: 20mm  
400mm x 600mm Thickness: 20mm

**MODEL NO.: YSI-139**

**YSI AUTOPSY KIT**

- \* Separate tool board for instruments.
- \* Circumferential drain channel with drainage holes.
- \* Easy to clean.

Including: 1 x Safety Tool Board, 1 x Dissecting Blade Handle F-60, 1 x Scissors No. 145, 1 x Trimming Blade Handle F-80P, 1 x Trimming Blade Handle F-130P 1 x Trimming Blade Handle F-80 mini  
Material: Plastic



Plate Size : Length x Width  
350mm x 160mm



**MODEL NO.: YSI-133**

**YSI TISSUE FLOATATION BATH**

For precise control of different samples at constant temperature. It is ideal for tissue culture, enzyme reactions fermentations tissue section processing etc. Ideally suited for preparing distortionless and wrinkle free tissue specimens. Its round, double walled, single piece Inner and outer chambers are made of aluminium, Inside black and outer surface finished in powder paint, with wide enough rim for drying the wet slides. Temperature is controlled by IMPORTED capillary type thermostat, from ambient to 70°C with an accuracy of  $\pm 2^\circ\text{C}$ . Supplied complete with pilot light, cord and plug. Suitable to work on 220 V, single phase, 50 Hz AC supply.

Chamber Size (mm)	Dia	x	Depth x Rim
	225	x	70 x 40

**MODEL NO.: YSI-133D**

**YSI TISSUE FLOATATION BATH**

-Microprocessor Based

Elegantly designed & fabricated and tested for carrying out distortion less and wrinkle free tissue specimens. In the field of diagnostic Histo-Pathology and Cyto-Pathology Laboratories.

Outer Wall : Made of CRCA Sheet duly powder coated after surface treatment

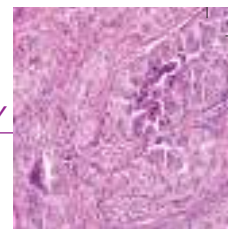
Inner Chamber : It is rectangular in construction & is made of seamless (Die pressed) stainless steel sheet polished bright.

Inner Chamber : It is rectangular in construction & is made of seamless (Die pressed) steel sheet duly. Painted provided with removable glass trough for water size: Insulation : High Grade insulation, filled around. Power Supply : 220 Volt, 50 Hz, Single Phase, A.C. Heating Element: Embedded heater element plate.



Temperature Controller fitted on the control panel.  
Temperature Range : Ambient to  $70^\circ\text{C} \pm 1^\circ\text{C}$

Glass Trough Size (mm) : 240(L) X 150 (W) X 50 (D)



**MODEL NO.: YSI-148**

**YSI V.D.R.L. ROTATOR**

—Fitted with Timer  
 For V.D.R.L. and other agglutination tests, blood grouping test and for mixing of solutions in small flasks, beakers and bottles. The rotator having a large platform of size 300 x 300 mm which can take concave slides, blood bottles and flasks hold by spring holder. It runs at fixed 180 R.P.M. An imported timer of 0 to 60 minutes is fitted to control the shaking duration. Supplied complete with mains cord and plug. Suitable to work on 220 V, single phase, 50 Hz, Ac supply.



**MODEL NO.: YSI-148Ex**

**YSI V.D.R.L. ROTATOR (NEW)**

—Fitted with Timer  
 Mixing of solutions in small flasks, beakers and bottles for V.D.R.L. and other kind of tests, same as per YSI-148 but with Digital Speed Controller & Indicator as well as Digital Timer of 0 to 199 minutes.

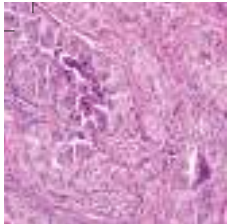


**MODEL NO.: YSI-149**

**YSI COLONY COUNTER**

An ideal instrument for counting Bacterial & Mould colonies in culture work. It provides uniform glare free illumination to minimise the strain on eyes and clearly defines even small colonies. A 100 mm dia lens covers the entire illumination field and its magnification assures highly accurate results. Counting plate with standard Wolfhugel ruling ensures clearly differentiated and sharply defined colonies. Supplied complete with counting plate, lens, cord and plug. Suitable to work on 220 V, single phase, 50 Hz, AC supply.





**MODEL NO.: YSI-150**  
**YSI COLONY COUNTER**

—Digital Display (Microprocessor Controlled), "CE Marked"  
It is designed to provide light effects for multipurpose viewing in Bacteriology, Virology & Mycology Labs. An ideal instrument for counting Bacterial and Mould colonies in culture work. It provides uniform glare free illumination to minimise the strain on eyes and clearly defines even small colonies. A 100 mm dia lens covers the entire illumination field and its magnification assures highly accurate results. Counting plate with standard Wolfhugel ruling ensures clearly differentiated and sharply defined colonies. Supplied complete with

**MODEL NO.: YSI-150Ex**  
**YSI COLONY COUNTER**

Features :

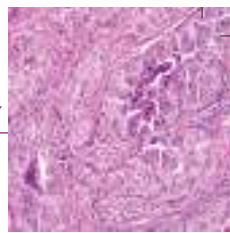
- Four digital displays  
4 digit display offers convenience of showing the present and previous three count values.
- Multi-counting average Galaxy 330 can make average count from multiple counting.
- Exclusive Back button  
The back button offers the convenience of deducting data when over counting
- Suitable for @tri-dishes in various diameters  
Galaxy 330's adjustable dish holder can accept most Petri-dishes in a wide range of diameters from 90 to 150 mm or 60 mm.
- Pressure sensor design  
Pressure sensor design can allow user to operate with any marking pens. No worry about sample spoiled or contaminated.
- Safety compliance :  
CE certification
- Applications :  
Total bacteria counting  
Total coliform counting



counting plate and lens.  
This model is fitted with automatic 4 digits L.E.D. Digital Display. It minimise the strain of counting. Each touch of Marking Pencil on the Petridish increments the colony count by '1' and the glowing L.E.D. Digital Display depicts the total colony count, thus relieving the technician from the tedious task of counting and eliminating the chances of error. Maximum colony count possible upto 9999. Provided with a manual RESET of digital display. ON/OFF switch, counting pencil, cord and plug. Suitable to work on 220 V, single phase, 50 Hz, AC supply.



Model	YSI-150Ex
Display	3-digital(0-999)LED display4 panel
Petri dish diameter	60mm or 90-150nm(adjustable)
Ouput	USB



**MODEL NO.: YSI-151**  
**YSI BLOOD CELL COUNTER**



—6 Unit, Blood Cell Counter  
For blood cell counting and simple computations, including percentage. Each unit counts upto 999 and last unittotalizes the different cells. A bell automatically sounds at every hundred.  
It has 5 keys and totalizer with dual knob on both ends to facilitate easy resetting. Supplied with safe transit packing and storage when not is use.

**MODEL NO.: YSI-152**  
**YSI BLOOD CELL COUNTER**



—9 Unit, Blood Cell Counter  
For blood cell counting and simple computations, including percentage, each unit counts upto 999 and the last unittotalizes the different cells. A bell automatically sounds at every hundred.  
It has 8 keys and a totalizer, with dual knob at both ends to facilitate easy resetting. Supplied with safe transit packing and storage when not in use.

**MODEL NO.: YSI-153**  
**YSI BLOOD CELL COUNTER**

—12 Units, Digital Display (Microprocessor Controlled)  
Elegantly looking, designed for easy handling, eliminates calculation while counting different blood cells. Yorco Differential Blood Cell Counter incorporate the latest Micro Processor based technology to pack the features of differential counting and percentage calculating in a single instrument to ease the blood cell counting procedures. It consists of 7 segment LED displays, touch key pads. 3 nos control keys, i.e. for Total, Percentage & Clear & 12 nos Differential Counting Keys. Beep sound for each key depression to confirm entry in the respective memory unit.



Attractively designed fibre glass cabinet in desk top model shape. Percentage of each cell count is possible at any stage. Supplied complete with cord and plug.  
Suitable to work on 220 V, single phase, 50 Hz, AC supply.

**MODEL NO.: YSI-160****YSI MICROSLIDE CABINET**

— Closed Pack Manner

For keeping 75 x 25 mm Slides in vertical position one after the other. Made of CRC Steel with attractive powder coated paint finish. The cabinet has 480 x 75 mm Drawers and takes slides in vertical position. Each Drawer moves in a slot and is completely removable for easy lifting of slides. The cabinet accommodates maximum number of Slides for optimum space utilization. Provided with lockable doors

Available in Following Capacities :

- 5000 Slides/16 Drawers
- 10000 Slides/30 Drawers
- 25000 Slides/80 Drawers
- 50000 Slides/160 Drawers

**MODEL NO.: YSI-160A****YSI MICROSLIDE CABINET**

— Closed Pack Manner

Same as per YSI-160 but completely made of S.S. 304 including slide carrying drawers

**MODEL NO.: YSI-161****YSI MICROSLIDE CABINET**

— Horizontal Manner

For safe and easy handling of 75 x 25 mm Slides. Made of CRC sheet. Well designed for its performance, durability and appearance. Powder coated paint outer finish with smooth working doors fitted with handle, lock and key.

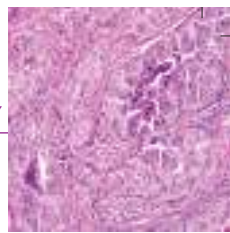
The anodized seamless moulded (die-pressed) aluminum slide strays for holding 75 x 25 mm slides, have been arranged separately so as not to disturb other compartments while taking out or putting in the slides.

The usual size of the tray is 335 x 230 x 35 mm and is properly fitted with uniformly slotted aluminum carriers in four rows, each holding 50 Slides i.e. each tray holds 100/200 Slides in horizontal position and is fitted with index holder. Slide holding slotted rows are numbered 1 to 50 to identify the slides.

Available in Following Capacities :

- 1000 Slides                      2000 Slides
- 3000 Slides                    5000 Slides
- 10000 Slides                    20000 Slides





**MODEL NO.: YSI-162**

**YSI MICROSLIDE CABINET (NEW)**

— Flat Manner,

Well designed for its durability and appearance. Fabricated out of thick C.R.C. sheet, finished with long lasting powder coated paint. Doors have continuous hinges for smooth operation, fitted with handle, lock and key. Each aluminium tray can accommodate twenty 75 x 25 mm slides in flat position. The Trays are deep enough to hold two slides, one on top of the other in each compartment, thus doubling the capacity. Trays can be placed in incubator without wrapping for conditioning of slides.

Available in Following Capacities :

- 500 Slides                      1000 Slides
- 2000 Slides                    3000 Slides
- 5000 Slides



**MODEL NO.: YSI-163**

**YSI PROJECTOR SLIDE CABINET**

— 35mm x 35 mm Slides

Projector Slides can be stored suitably in this cabinet Made of CRC Sheets well designed for its durability and appearance and Powder coated finish. Smoothly working door, fitted with handle, lock and key. Slide trays made of Anodized Aluminium have been arranged separately to avoid any disturbance to other trays, while taking out or putting in. The Trays are fitted with uniformly slotted aluminium plates each holding. 50/100 slides and index card holder.

Available in following capacities :

- 500 Slides                      800 Slides
- 1000 Slides                    2000 Slides



**MODEL NO.: YSI-164**

**YSI BLOCK CABINET (NEW)**

Block Cabinet is made of CRC Sheets duly powder coated. The internal drawers are also made of M.S. duly powder coated. Each drawer having 4 to 8 compartments with capacity of 125 blocks approximately. Index card holder and handle are provided on each drawer Handle has been provided on front panel. The cabinet has door for dust free storage & is provided with lock & key.

Available in following capacities :

- 2000 blocks                    5000 blocks
- 10000 blocks                20000 blocks



HISTOPATHOLOGY



**MODEL NO.: YSI-165****YSI BLOCK CABINET (NEW)**

For Keeping Blocks embeded in embedding rings/Disposable Cassettes. CRC duly powder coated tray are suitably designed to keep the blocks one after the other in rows for easy & quick storage and removal with individual ring no showing on top. Each tray will accomodate Block in rows sliding smoothly in place and can be taken out easily

Available in following capacities :

- 2000 blocks
- 5000 blocks
- 10000 blocks
- 20000 blocks

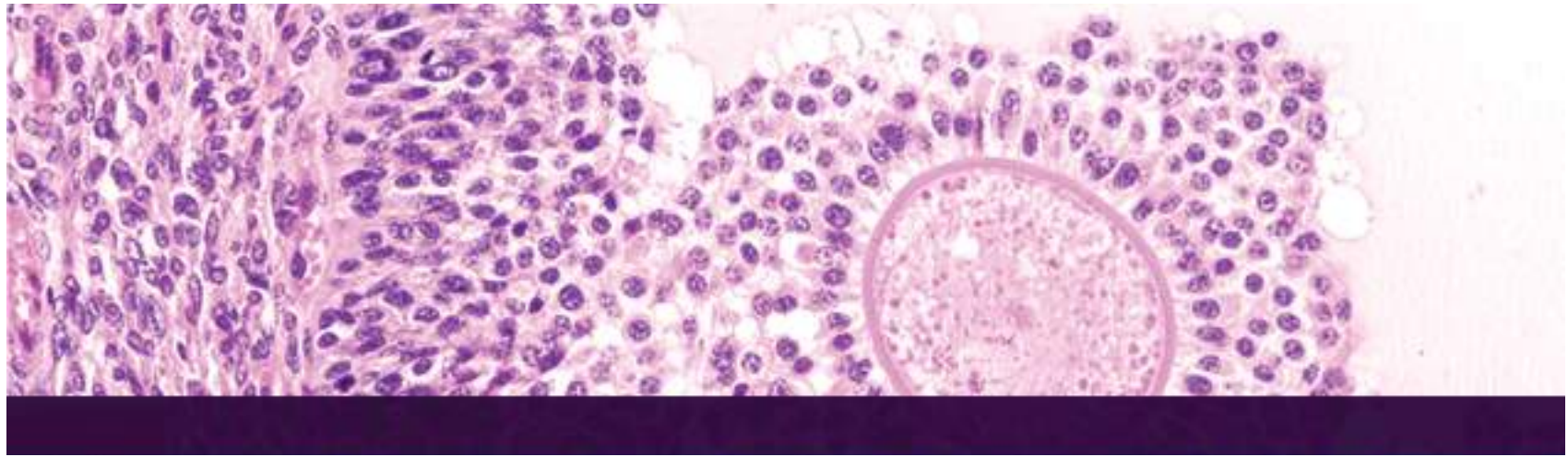
**MODEL NO.: YSI-166****YSI SLIDE RACK**

Slide rack to keep Slides in vertical position before and after mounting. Made of Anodized Aluminium.

**MODEL NO.: YSI-167****YSI SLIDE CARRYING TRAY**

These are made of anodized aluminium for keeping twenty Slides of size 75mm x 25 mm in flat position.



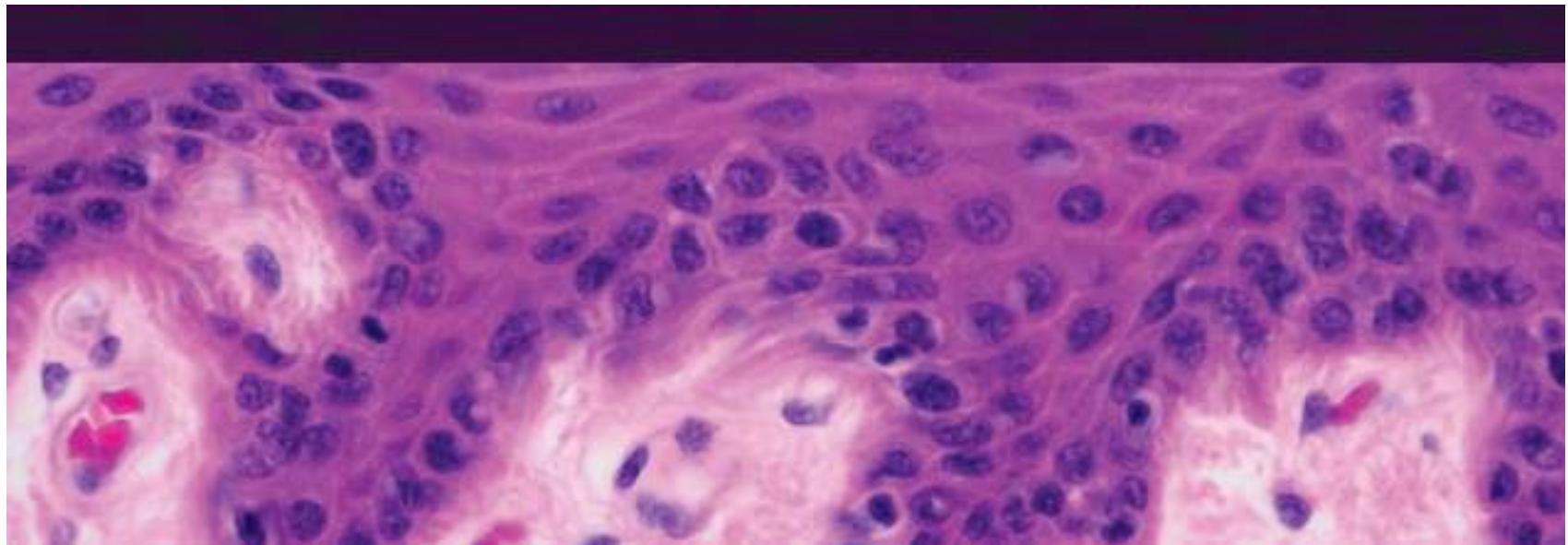


# YORCO

S A L E S P V T . L T D .



**STERICLEAN**



CORPORATE OFFICE

## YORCO SALES PVT. LTD.

Yorco Corporate Tower, Plot No.2, Gazipur, Patparganj, Delhi-110096

Tel.: 011-46202222 (100 lines), Fax : 011-46202244

Email: [sales@yorco.com](mailto:sales@yorco.com), Website: [www.yorco.com](http://www.yorco.com)

### YORCO CUSTOMER SUPPORT CENTRES

#### DELHI

11, Netaji Subhash  
Marg, Daryaganj, N.Delhi-02  
[sales@yorco.com](mailto:sales@yorco.com)

#### MUMBAI

Yorco Chamber  
3A, Takwadi, Mumbai- 400002  
[mumbai@yorco.com](mailto:mumbai@yorco.com)

#### HYDERABAD

3-4-512/4/1, LIG-H34RRT,  
Barkatpura, Hyderabad-04  
[hyderabad@yorco.com](mailto:hyderabad@yorco.com)

#### CHENNAI

Post Box No. ....  
Chennai- 18  
[chennai@yorco.com](mailto:chennai@yorco.com)

#### BANGLORE

Yorco Estate, No.7,  
4th Cross, Banglore-32  
[blr@yorco.com](mailto:blr@yorco.com)

#### KOLKATA

Post Box No. ....  
Kolkata- 700007  
[kolkata@yorco.com](mailto:kolkata@yorco.com)