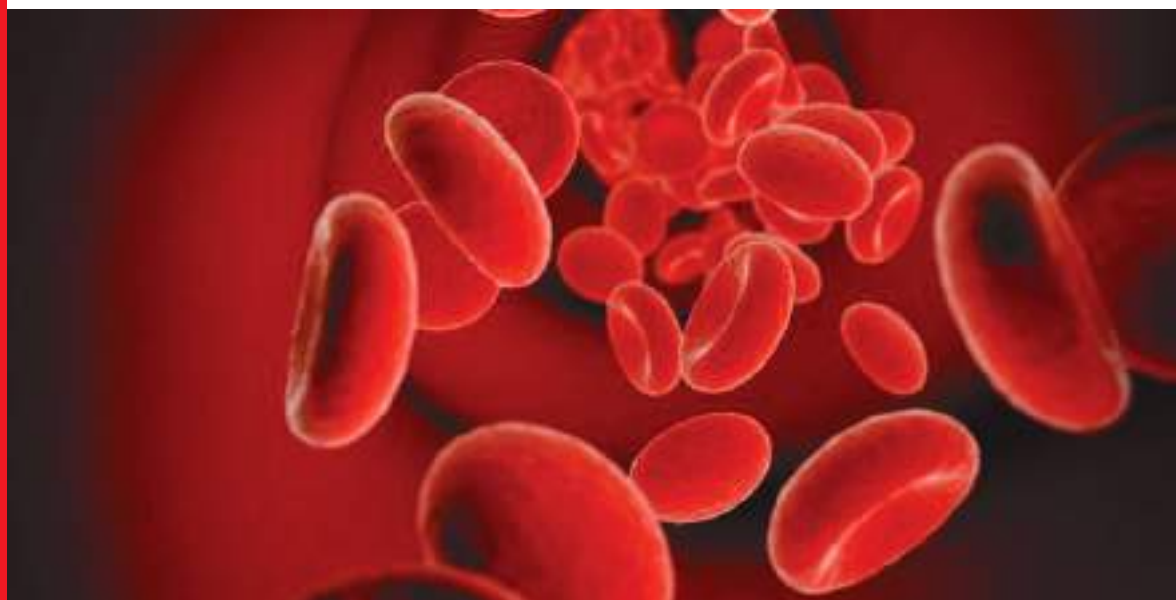


# BLOOD BANK



**YORCO**  
S A L E S P V T . L T D .

**MODEL NO.: YSI-572****YSI BLOOD BANK REFRIGERATOR**

Environment friendly CFC free refrigerant used PUFF insulated for better cooling efficiency. YSI Blood Bank Refrigerators are most versatile unit for Blood Bank, Specially designed for this purpose. It is available in various capacities for storing the blood bags/bottles of capacity upto 450 ml., in an automatically controlled temperature of 2°C. to 6°C. Forced air circulation ensures uniform temperature. All over inner chamber of the refrigerator is maintained with in prescribed temp of 4°C ± 2°C and ensure variations at all over inside the cabinet is maintain to within ± 1°C

Construction : External body is made of M.S. sheet, duly pretreated in 7 process dipping tank and is finished with powder coated paint for lasting finish. Caster wheels provided for easily mobility. Inner chamber is made of high quality stainless steel, highly polished S.S. Sliding trays are provided, for accommodating blood bottles or Blood bags in up right position and to provide air space between bags to avoid sardine effect as per WHO Guide lines.

Cooling System : Cooling is achieved by highly efficient Environment friendly CFC Free refrigeration system using hermetically sealed compressor and other parts. The unit is PUF insulated for better cooling efficiency

Two doors are provided. Inner door is of clear acrylic /plain glass sheet glass for easy viewing inside the chamber. Outer door is made of Double walled insulated inside made of stainless steel & outer body duly powder coated or as optional door is made of toughned glass and duly insulated for proper sealing from external environment and is lockable. Space between two glass doors are kept moisture free.

Std. & Approvals : ISO-9001:2000, WHO-GMP, CE MARKED.

Temperature Control : Temperature inside the chamber is maintained automatically by Digital Temp. Controller-cum-Indicator . Between +2°C for + 6°C with controlling & display resolution of 0.5°C by 4 x7 segment LED Digital temp. sensor dipped in liquid container to match the temp of Blood & is placed on high shelf as suggested in technical mannual M BB 10th Ed.

An audiovisual alarm system is incorporated with battery back up in case of mains failure or temperature variation beyond permitted tolerance or door opening to prevent the spoilage of stored blood bags. Inside illumination is provided for visibility of



bags kept inside the chamber.

Control Panel : All controls such as digital temperature controller-cum indicator, mains switches, indicating lights, battery check switch, Audio visual alarm, & voltmeter are easily accessible.

Power supply : Suitable to work on 220 V, 50Hz, AC supply.

**Capacity :**

- 85 Ltr— 50 Blood bags
- 165 Ltr— 110 Blood bags
- 200 Ltr— 200 Blood bags
- 280 Ltr— 250 Blood bags
- 400 Ltr— 360 Blood bags

**Optional Accessories :**

- Weekly temperature recorder
- Voltage stabilizer-3 KVA/4 KVA
- Microprocessor controller along with built in stand by controller
- Display temperature inside the cabinet as well as record the temp on a 7 day chart. Sensor is factory calibrated & matched with indicator controller hence



**MODEL NO.: YSI-577**

**YSI AUTOMATIC BENCH TOP SEALER FOR PCV TUBING**

- For Heavy Duty Job.
- Automatic Clamp.
- Self adjusting RF energy
- Optional hand gun for best flexibility of use.

This sealer is designed for bench use and for heavy duty job. The sealing clamp automatically closes once the tube is inserted inside by producing a seal in about 1.5 seconds.

The protection cap of the clamp it is easy to remove and it is washable. It can be used to seal most of standard PVC tubing upto 5mm available on the market. It is easy to use and to clean and it has a high working capacity. Each seal appears with a central line to facilitate the snap-apart separation of the two parts: sterility of internal blood components is maintained as well.

A anti-spark and overheat protection systems to avoid damage to the system and tubing it is included as standard. A



beep and LED signals indicate the presence of sparks while sealing, electrodes dirty or system over heating. A separate hand gun is available as an option to improve the flexibility of work

YSI BBCM is a compact and accurate blood collection monitor (balance/mi designed to make blood bank donation safe and simple. It will easily accept all of blood donor bags.

**MODEL NO.: YSI-582**

**YSI ELECTRONIC BLOOD COLLECTION MONITOR**

YSI BBCM is equipped with a linear mixing system that always guarar excellent mixing of blood with the anticoagulant. As standard is possible to ai the value of the alarms for the low and high flow, together with the maxir donation time up to 20 minutes. In addition is possible to set a switch on the It's also possible to change the desired volume to collect at any time, inclu during the donation.

At the end of the donation YSI BBCM will automatically clamp the tube activating an optical and visual alarm. During this phase, the display will show alternately the final volume collected and the donation time, in minutes and seconds.

This mixer is very simple to calibrate via software with a calibration weight (see option below) with the optional rechargeable battery pack YSI BBCM work also without power for up to 80 donations.

The battery can be charged by powering the YSI BBCM or by the optional battery charger.



Specifications :

- Weighing range from 10 to 990m1.
- Automatic tare to zero for the bag weigh.
- Automatic Low and High Flow alarm adjustable.
- Maximum donation time control (set up to 20 minutes)
- Setting of the default values.
- Automatic tube clamp at the end of the donation

B L O O D B A N K E Q U I P M E N T



**MODEL NO.: YSI-573**  
**YSI PLATELET INCUBATOR**

The YSI Platelet Incubator uses state of the art technology to achieve a reliable, control over temperature. It is preset at 22° C for platelet application Environment friendly CFC Free Refrigerant used and PUF insulated for better efficiency and a reliable heavy duty hermetically sealed cooling/heating provides the required temperature. A forced air circulation ensure uniform temp. within the chamber. A audio visual alarm is provided for temp. variation beyond permitted tolerance.

A Digital Temperature Controller cum Indicator is provided to accurately maintain the set temperature within  $\pm 2^{\circ}\text{C}$ .

The chamber is of suitable capacity to easily accommodate the platelet rotator or platelet agitator & has built in power socket in it.

The chamber is made of stainless steel High grade insulation provides extremely efficient thermal barrier ensuring optimum efficiency. Exterior is made of mild steel duly powder coated. Provided with Flicker free CFL for uniform lighting.

Specifications :

Capacity	: 120 Ltrs.
Temperature	: $22 \pm 2^{\circ}\text{C}$
Controlling Resolution	: $0.5^{\circ}\text{C}$
Recording	: Recording is made (in ink) on a weekly circular chart paper (Option-Inkless recording)
Cabinet Material	: External M.S. Sheet Pretreated and Powder coated.
Door	: Transparent door internal S.S. Sheet
Air Circulation	: Air inside the incubator is circulated using a fan to maintain uniform temperature inside the cabinet.
Condensate Evaporator	: Built - in condensate evaporator is provided.
Power Sources	: 220V, 50 Hz, AC
Power Consumption	: 800 W (Approx.)
Provided with Audio & Visual alarms for High or Low Temp, Door Open, Battery Low and Power Failure.	



**MODEL NO.: YSI-576**

**YSI PLATELET AGITATOR**

A Platelet is highly efficient and very convenient to use. Outer cabinet is made of powder coated steel sheet which with stand corrosion and wear and tear and interior is made of stainless steel duly polished. Back and forth motion of the flat-bed agitator provides gentle mixing of platelets. Pause Switch enables interruption of agitation of platelet storage bags in the machine and automatic re-start in 10 seconds.

- Capacity : 24, 36, 48 bags/100 bags
- Movement : Flat— Bag Agitator
- Stroke Length for to and for Movement : 36 ± 3 mm
- Oscillation : 75 ± 5 cycle /minute
- Storage Frame : Smooth — sliding stainless steel trays, easily removable for cleaning.
- Audio—Visual alarm : Fuse blow-out
- Storage Capacity : 100 bags for 10 trays model  
48 bags for 8 tray model  
36 bags for 6 tray model  
24 bags for 4 tray model



- Audio Alarm : Power failure (supported by a rechargeable NiCd battery)
- Pause Switch : Arrests motion for 10 seconds to enable removal or loading of bags in the trays.
- Power Source : 230± 10%V, 50 Hz.
- Power Consumption : 60/65W

**MODEL NO.: YSI-574**

**YSI PLATELET ROTATOR**

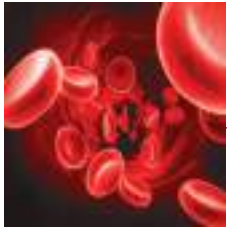
Platelet Rotator built to improve the viability of platelet concentration at +22°C. temperature. Yorco has also designed platelet incubator exclusive to accommodate platelet rotor inside the platelet incubator.

Highly efficient action for rotation of samples. Platelet Rotator maintains donor platelets in an even suspension & prevents clumping. It rotates at a speed of 4-5 RPM. Capacity 36 bags.

The operating principle is very simple and its design is sound for long and trouble free service, even when used constantly night and day.

An alarm system can be provided to alert the technician, if the rotor stops-rotating for reasons other than power failure. Supplied with cord and plug. Suitable 220 Volts, 50 Hz, AC Supply.





**MODEL NO.: YSI-567**

**YSI PLASMA THAWING BATH**

YSI Thawing Bath is specially manufactured and designed in accordance with International Safety Standards for quick and safe thawing and warming of blood or blood components for blood or plasma transfusions.

Salient Features :

- Total stainless steel construction and moving parts out of Engineering plastics.
- Versatile application.
- Easy maintenance and cleaning.
- Safe and reliable warming process.
- Continuous shaking of the samples to prevent clogging.

Technical Specifications	:
Temperature range	: +37°C
Temperature stability	: ±1°C
Temperature control	: PI Controller
Temperature sensor	: PT 100
Temperature display	: Digital (LED)

Temperature bath volume	:	20L
Top opening (wxd)	:	22 x 19.5 cm 700 ml
Heater capacity	:	500 W
Shaking Device	:	By Centrifugal water Circulation Pump
Amplitude (optional)	:	22, 25, 40 min
Timer:		
FFP (Yellow)	:	30 min
Blood (Orange)	:	20 min
Solution (White)	:	10 min
Insert frame capacity:		
300ml bags	:	5 bags
450ml bags	:	4 bags
Power requirements	:	220 V/1 Ph/50 Hz.
Power consumption	:	10A
Dimensions (WxDxH)	:	33.5 x 46 x 38cm
Weight	:	17 kg.



**MODEL NO.: YSI-568**

**YSI CRYOPRECIPITATE BATH**

General:

Designed and developed for easy, safe and convenient Thawing of fresh for frozen plasma at 4°C for optimum gain of Cryoprecipitate.

It also allows the Plasma to Thaw at 1 °C - 6°C by placing the bag in a 4°C Shaking Water Bath.

Salient Features :

- Efficient compressor, heater and a pumping system to ensure temperature maintenance at any set value between 3°C to 6°C.
- High capacity pump ensures optimum and uniform thawing or plasma.
- Microprocessor based controller for accurate monitoring and controlling of temperature at -4°C.
- Capacity of 12 plasma bags in one cycle. (Suitable for large blood banks as large centrifuge have 12 bags capacity).
- Tray with individual compartments ensures that port of bags are kept alone water level during procedure.
- Mounted on 4 Nos. 2" Antistatic lockable caster wheels.

Technical Specifications:

Input power supply	:	230±10%V, 50Hz, 15A single phase AC.
Power consumption	:	1500W
Programmable:		
Temperature range	:	3°C to 56°C
Operating temperature	:	3.8 to 4.2°C
Temperature controller	:	Microprocessor based digital controller
Display	:	4x7 segment LED (Red)
Display resolution	:	0.1°C
Capacity(in terms of bags)	:	12 regular fresh frozen plasma bags
Time taken for one process:		50-60 minutes (for plasma bags stored at -40°C)
Tray	:	Stainless steel, removable tray of 4x3 Configuration, individual compartments for holding plasma bags sealed sensor dipped directly in the water
Temperature sensing method		



**MODEL NO.: YSI-569**  
**YSI PLASMA FREEZER**

YSI Plasma Freezer provides safe uniform storage of plasma and blood related components/products at uniform preset temperature of  $-30^{\circ}\text{C}$ . Standard plasma bags are of 250-450m1 bags. All models are provided with cover temperature alarm.

All controls such as temperature display-cum-controller, main switch, pilot light for power and over temperature/power failure alarm etc. are easily accessible.

Exterior cabinet is made of M.S. Sheet & are pre-treated & finished with powder coating. Insulation is provided in between inner & outer walls.

The inner chamber is made of stainless steel, highly polished. SS trays are provided for accommodating plasma bag.

YSI Plasma Freezers are having dependable compressor hermetically sealed for cooling system using Environment

friendly CFC Free Refrigerant and PUF insulated. Air circulation ensures uniform temperature. Suitable to work on 220 Volts, 50 Hz, single phase, AC supply..

Capacity: 130 Bags of plasma.

Optional Accessories :

- Temperature Chart Recorder, Weekly.
- Stabilizer.

**MODEL NO.: YSI-570**  
**YSI PLASMA FREEZER**

Same YSI-569 but to accommodate 240 plasma bags.





**MODEL NO.: YSI-155**

**YSI ELISA PLATE ROTATOR**

For Elisa plate shaking at adjustable speed from minimum to maximum required for Elisa test. Provided with digital speed controller cum indicator. The Rotator having platform of size 300 x 300 which can take Elisa plates in the special framed cavities. An imported timer 0-1 hr. is also fitted to control the shaking duration. Supplied complete with cord & plug. Suitable to work on 220 V Single Phase 50 HZ Ac supply.



**MODEL NO.: YSI-156**

**YSI PLASMA SEPARATOR**

For efficient, Clear Separation of Blood Components. The stand is designed to Extract Blood Components from a Blood Collecting Bag to a Satellite Bag or from a Satellite bag to a transfer bag. Keeps constant gentle pressure for separating plasma with safe transfer. Blood bag is kept in between pressure plate and the uniform wall of the equipment. After releasing the pressure it is easy to transfer from blood bag to satellite bag. It is easy to operate. Accommodates bags upto Capacity : 500 ml



**MODEL NO.: YSI-158**

**YSI SYRINGE NEEDLE DESTROYER**

Scientific research has discovered that used syringes and needles are very dangerous to humans that can cause incurable diseases like AIDS, Hepatitis and many more. A unique equipment has been developed by YSI to destroy both i.e. needle and syringes in a Safe, Eco-friendly and Cost effective manner.

After switching ON, insert the used needle to the small hole provided and with in seconds the needle will be destroyed. Insert the syringe on the top of the machine in the big 2ml hole provided with a cutting blade, just pull the lever and syringe will be cut into two. A tray is built in to collect Needle residue & Syringe stubs. Specially designed electrodes generate high temperature to instantly incinerate the needle.

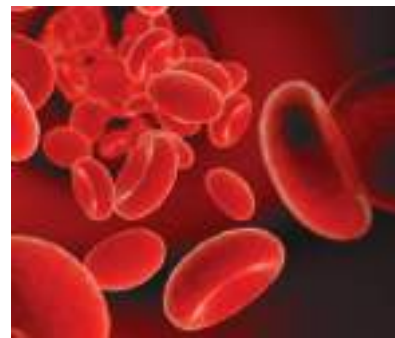


**MODEL NO.: YSI-158A**

**YSI SYRINGE NEEDLE DESTROYER**

Same as ..YSI-158 but provided with Battery back up With built in power source trickle charger. Battery is constantly charged when main in ON. It shifts automatically to battery operation in case of power failure, without disturbance in the operation An overload trip device is also provided. Beside the needle residue tray, a syringe container (Optional) is provided to collect syringe bodies after cutting.

B L O O D B A N K E Q U I P M E N T



# YORCO

S A L E S P V T . L T D .



**STERIGLEAN**



CORPORATE OFFICE

## YORCO SALES PVT. LTD.

Yorco Corporate Tower, Plot No.2, Gazipur, Patparganj, Delhi-110096

Tel.: 011-46202222 (100 lines), Fax : 011-46202244

Email: [sales@yorco.com](mailto:sales@yorco.com), Website: [www.yorco.com](http://www.yorco.com)

### YORCO CUSTOMER SUPPORT CENTRES

**DELHI**  
11, Netaji Subhash  
Marg, Daryaganj, N.Delhi-02  
[sales@yorco.com](mailto:sales@yorco.com)

**MUMBAI**  
Yorco Chamber  
3A, Takwadi, Mumbai- 400002  
[mumbai@yorco.com](mailto:mumbai@yorco.com)

**HYDERABAD**  
3-4-512/4/1, LIG-H34RRT,  
Barkatpura, Hyderabad-04  
[hyderabad@yorco.com](mailto:hyderabad@yorco.com)

**CHENNAI**  
Post Box No. ....  
Chennai- 18  
[chennai@yorco.com](mailto:chennai@yorco.com)

**BANGLORE**  
Yorco Estate, No.7,  
4th Cross, Bangalore-32  
[blr@yorco.com](mailto:blr@yorco.com)

**KOLKATA**  
Post Box No. ....  
Kolkata- 700007  
[kolkata@yorco.com](mailto:kolkata@yorco.com)