

MODEL NO.: YSI-060

YSI SEMI AUTOMATIC ROTARY MICROTOME (NEW)

Fully Motorised, Programmable Rotary Microtome
The New YSI-060 Semi-Automatic rotary microtome characterizes the faultless combination of cost effective competence and user comfort. It is the instrument of choice for clinical histology and histopathology application, as well as for industry quality assurance.

Manual sectioning is enhanced by the high precision motorized specimen feed, which fallout in efficient operation with utmost section reproducibility. Improved user comfort results in maximum workspace efficiency and high throughput.

Well located storage Area

An incorporated storage tray makes certain subsidiary tools are in hand at all the times

Safety During Sectioning

Protection is assured by incorporated black finger protection guard of the knife holder that exceptionally safeguards the blade edge. When used correctly the integrated finger protection guard rules out potential injuries because it can even remain on the blade edge during sectioning.

Contented Operation

All functions are controlled via touch sensitive buttons located on both sides of the block holder.

Trouble Free Operation

Ergonomics and user comfort are key concern for the placement of coarse feed wheel, which is located close to the operator. The mechanical trimming function, conveniently positioned next to coarse feed wheel, purge the need to turn coarse feed wheel during trimming

Spacious Section Waste Tray

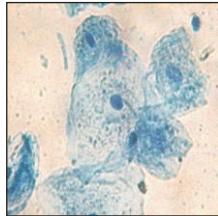
The spacious section waste tray consistently gathers sectioning wreckage

Accurate Specimen orientation with clear zero reference point

This new orientation technique sets innovative standards of precision and is very effortless to operate. Calibrated controls make it easy to fiddle with a specified by assessable variable on the x/y axis for re – cuts

Imaginative Knife holder adjustment

The complete width of the knife could be used by using straight forward blade fastening mechanism Using the complete knife edge is cost effective, particularly in laboratories with high specimen throughout.



HISTOPATHOLOGY

Technical Data
Section Thickness
0.5 mm - 90mm
Setting Values

Section Thickness Setting range
from 0.5 mm - 1 mm in 0.5 mm increments
from 1mm -99 mm in 1mm increments

Trimming Section
Thickness setting Range
Setting Values

0.5 mm - 99mm
from 0.5 mm - 1mm in 0.5 mm increments
from 1mm - 99 mm in 1mm increments

Specimen Retraction
Motorized Operation
Horizontal Specimen Feed
Vertical Specimen Feed
Sectioning Modes
Maximum Specimen Size
Specimen Orientation
Operating Voltages

Varying with section speed
Approx. 30mm
Approx. 60mm
1 Manual Mode
50mm(L)x60mm(H) x 40mm(W)
Horizontal:8°, Vertical:8°, Z:360°
Nominal Supply Voltages
100V/120V/230V/240V
50/60 Hz.

Nominal Frequency
Dimensions basic instruments
Width (including handweel)
Depth (including waste tray)
Height (with storage cover)
Weight (with accessories)

390mm
510mm
305mm
Approx, 26 Kg.

General

- Compact Ergonomic Overall Design
- Accurate Specimen orientation with zero-point reference
- Easy shift between trimming and sectioning operation
- Two motorized forward specimen coarse feed speeds
- Automatic Specimen retraction
- Section – Handed function universal cassette clamp
- Absolutely new knife holder replica for disposable blades, with finger guard in contrasting color
- User safety incorporated into overall design
- Smoothing – running hand wheel with incorporated quick – lock method
- Accurate knife holder lateral movement
- Ergonomically optimized hand wheel handle
- Communication display incorporated in instrument housing enclosed micrometer mechanism
- Enclosed micrometer mechanism
- Spacious section waster tray
- Wide range of accessories
- Automatic retraction

Supplied complete with: -

- Cassette holder
- Knife holder base
- Standard knife holder.
- Object orientation unit
- Section waste tray.
- Disposable blade (Pack of 50 Blades)

